

ProTec 50 – the lightweight crash barrier.

T1 / W2 / ASI A



Safety by Berghaus





ProTec 50 as road divider in a 4:0 road layout.

Mobile crash barriers in roadworks clearly enhance traffic safety. Their containment capacity prevents road users from leaving the carriageway and colliding with oncoming traffic, while also providing safe working conditions on site.

The mobile crash barrier ProTec 50 with a very narrow structural width of only 24 cm and a weight of 28.7 kg per meter is an ideal addition to the proven portfolio of ProTec products. This is currently the narrowest and lightest mobile road restraint system in the ProTec family and is based naturally on the well-known benefits of the tried and tested ProTec 100/120/160 systems. Thanks to the minimum space requirements, ProTec 50 is ideal for the ZTV-SA area of application D (between opposing flows of traffic), also thanks to its small effective range of W2.

No matter what your particular application is, mobile crash barriers in the ProTec family always put you on the safe side!

Advantages of the ProTec 50 mobile crash barrier at a glance:

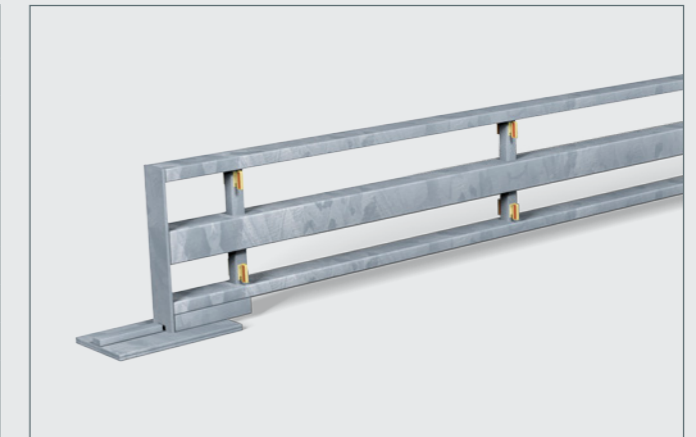
- positive appraisal and approval by BAST
- narrow structural width needs minimum space requirements
- reflectors mounted in protected recess
- generous water drainage opening under the crash barrier
- no risk of aquaplaning or of dirt accumulating in front of the crash barrier
- no start or end anchoring necessary
- system with successfully tested tipping length limitation (KLB element)
- rubber-based stands protect the road surface
- quick and easy installation
- force-fit connections available for all ProTec barriers
- low element weight for high transport loading volume

The ProTec family consists of several successfully tested mobile crash barriers – for all application areas of mobile road restraint systems pursuant to the ZTV-SA. Despite differing shapes and structures, all mobile crash barriers in the ProTec family can be combined with each other and fitted together with force-fit connections. Mobile crash barriers in the ProTec family can also be combined with stationary restraint systems or mobile systems by other manufacturers with a force-fit connection.

ProTec 50: Minimum space requirements, fast installation.

Technical data

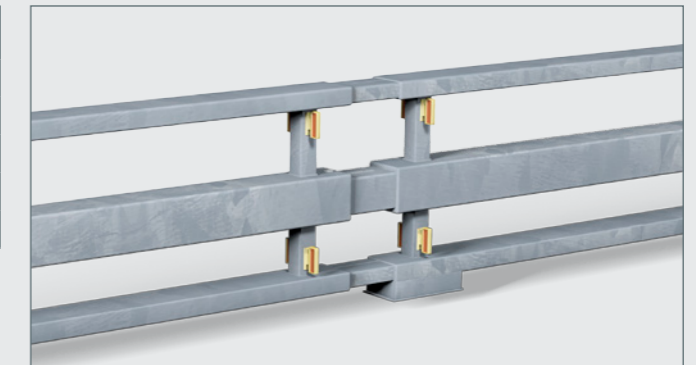
Containment level	T1
Effective range	W2
ASI value	A
Structural width	0.24 m
Height	0.50 m
Element length	6 m
Minimum installation length	149 m
Ground anchoring	no
Weight per m	28.7 kg
Test date	29/08/2012
Test number	BAST 2012 7S 52



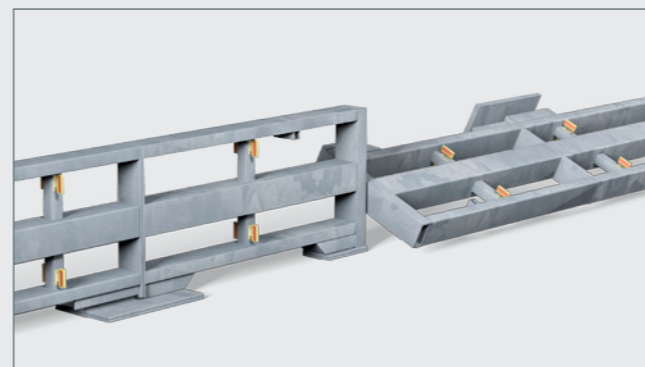
Standard element 6 m

Test conditions as per DIN EN 1317-2

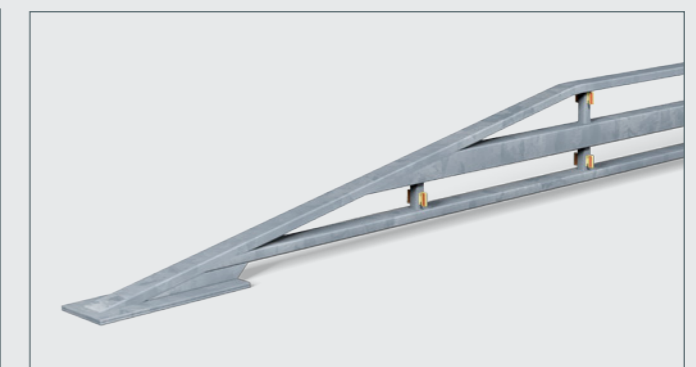
Acceptance test	TB 21
Test vehicle	PKW
Weight	1.3t
Impact angle	8°
Speed	80 km/h



Dilatation element

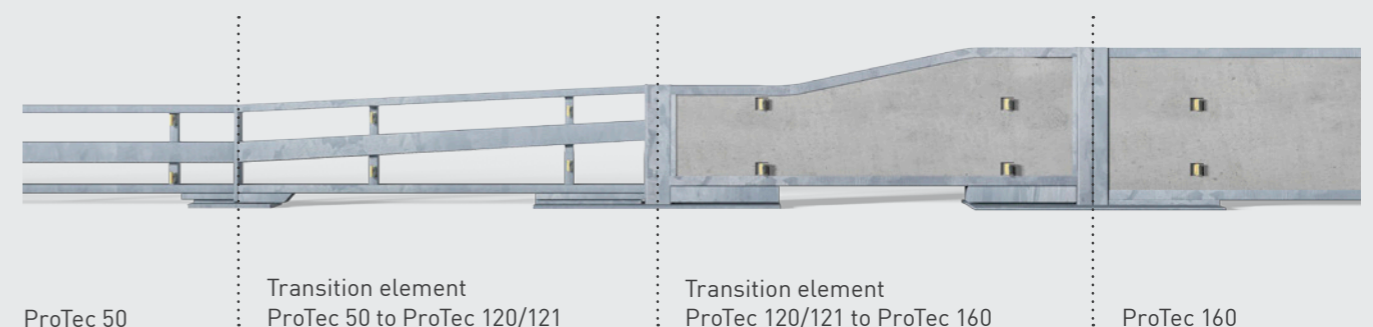


Tipping length limitation (KLB element)



Start/end element

Combination example for a force-fit connection across the whole ProTec family.



ProTec 50

Transition element
ProTec 50 to ProTec 120/121

Transition element
ProTec 120/121 to ProTec 160

ProTec 160



Peter Berghaus GmbH

Herrenhöhe 6

51515 Kürten-Herweg

P +49 (0)2207 9677-0

F +49 (0)2207 9677-80

mail@berghaus-verkehrstechnik.de

www.berghaus-verkehrstechnik.de



Subject to technical changes and errors.
Products may differ from illustrations shown.
All details are approximate.