

# ProTec 100 – our Bestseller.

T1 / W1 / ASI A and T3 / W2 / ASI A as well as H1 / W6 / ASI A



Safety by Berghaus







## Contraflow traffic safely separated with ProTec 100.

Mobile crash barriers in roadworks clearly enhance traffic safety. Their containment capacity prevents road users from leaving the carriageway and colliding with oncoming traffic, while also providing safe working conditions on site.

The mobile crash barrier ProTec 100 with a very narrow structural width of only 25 cm and a weight of 124 kg per meter is an ideal addition to the proven portfolio of ProTec products. Given the positive echo to the mobile road restraint systems ProTec 120 and 160, the Berghaus development engineers have created a crash barrier that builds on and even supplements the known advantages of the ProTec systems.

No matter what your particular application is, mobile crash barriers in the ProTec family always put you on the safe side!

### Advantages of the ProTec 100 at a glance:

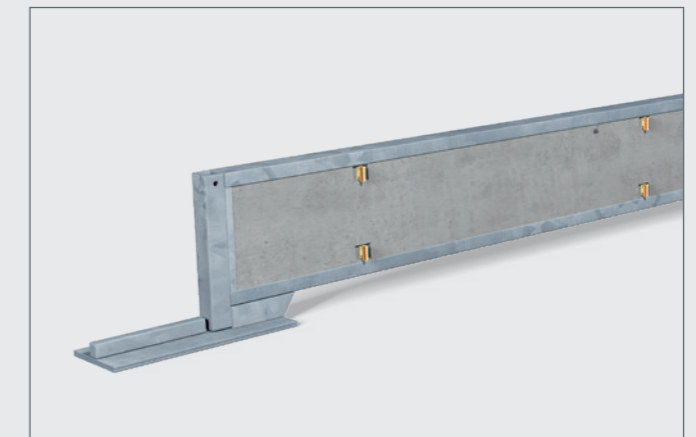
- test conditions as per DIN EN 1317-2
- narrow structural width needs minimum space requirements
- force-fit transitions available for all ProTec systems
- repair elements for swift reconstruction after an accident
- rubber-based stands protect the road surface
- reflectors mounted in protected recess
- generous water drainage opening under the crash barrier
- no risk of aquaplaning or of dirt accumulating in front of the crash barrier
- system with successfully tested tipping length limitation (KLB element)
- quick and easy installation

The ProTec family consists of several successfully tested mobile crash barriers – for all application areas of mobile road restraint systems pursuant to the ZTV-SA. Despite differing shapes and structures, all mobile crash barriers in the ProTec family can be combined with each other and fitted together with force-fit connections. Mobile crash barriers in the ProTec family can also be combined with stationary restraint systems or mobile systems by other manufacturers with a force-fit connection.

## ProTec 100: Minimum space requirements, fast installation.

### Technical data

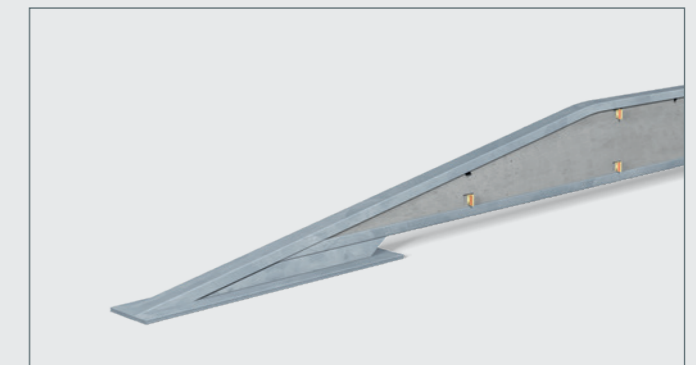
|                             |                       |
|-----------------------------|-----------------------|
| Containment level           | T1 / T3 / H1          |
| Effective range             | W1 / W2 / W6          |
| ASI value                   | A                     |
| Structural width            | 0.25 m                |
| Height                      | 0.56 m                |
| Element length              | 6 m                   |
| Minimum installation length | 137 m / 137 m / 118 m |
| Ground anchoring            | no / no / yes*        |
| Weight per m                | 124 kg                |



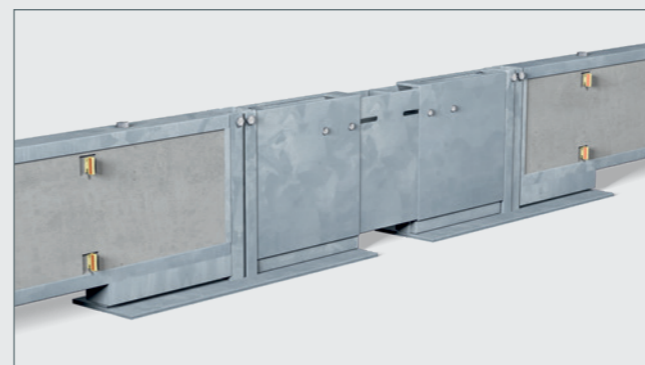
Standard element 6 m

### Test conditions as per DIN EN 1317-2

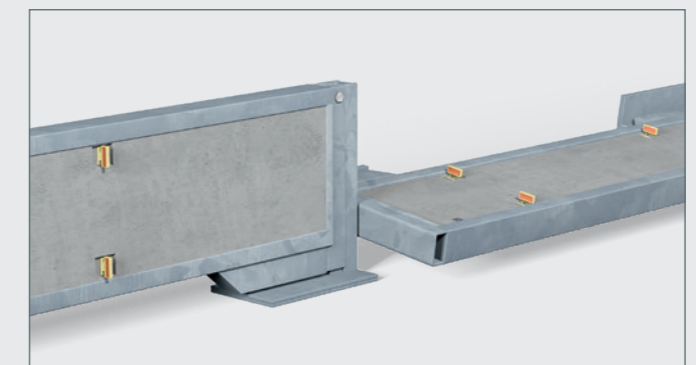
| Acceptance test | TB 21 / TB 41   | TB 11 / TB 42    |
|-----------------|-----------------|------------------|
| Test vehicle    | PKW / LKW       | PKW / LKW        |
| Weight          | 1.3t / 10t      | 0,9t / 10t       |
| Impact angle    | 8° / 8°         | 20° / 15°        |
| Speed           | 80km/h / 70km/h | 100km/h / 70km/h |



Start/end element

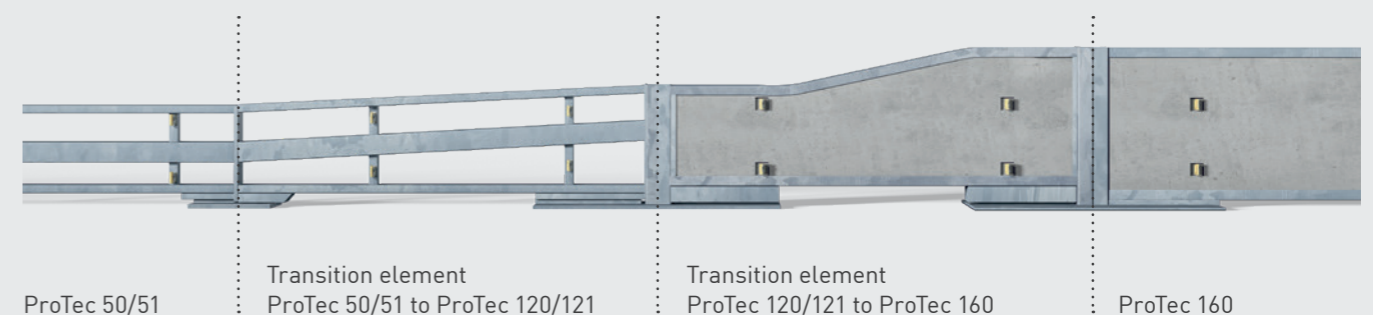


Dilatation element



Tipping length limitation (KLB element)

### Combination example for a force-fit connection across the whole ProTec family.



ProTec 50/51

Transition element  
ProTec 50/51 to ProTec 120/121

Transition element  
ProTec 120/121 to ProTec 160

ProTec 160

\*only start/end points



**Peter Berghaus GmbH**

Herrenhöhe 6

51515 Kürten-Herweg

**P** +49 (0)2207 9677-0

**F** +49 (0)2207 9677-80

mail@berghaus-verkehrstechnik.de

www.berghaus-verkehrstechnik.de



Subject to technical changes and errors.  
Products may differ from illustrations shown.  
All details are approximate.